

Defining heart disease risk for death in COVID-19 infection

Jialing Li^{1,#}, MD; Tao Guo^{1,#}, MD; Dandan Dong², MD; Xinxin Zhang¹, MD; Xi Chen¹, MD; Yujia Feng¹, MD; Baozhu Wei¹, MD; Wei Zhang¹, MD; Min Zhao^{3*}, PhD; Jing Wan^{1*}, MD.

¹Department of Cardiology, Zhongnan Hospital of Wuhan University, Wuhan, 430071, China

²Department of Infectious Disease, Wuhan Seventh People's Hospital, Wuhan, 430071, China

³Department of Biomedical Engineering, school of Basic Medical Sciences, Wuhan University, Wuhan, 430071, China

These authors contributed equally to this work and share the first authorship.

* These authors contributed equally to this work and share the corresponding authorship

Corresponding author: Jing Wan, MD, PhD, Department of Cardiology, Zhongnan Hospital of Wuhan University; 115 East Lake Road, Wuhan, Hubei, China, 430071; Tel: +8618971656126; Email: wanjingwhu@163.com. Min Zhao, PhD, Department of Biomedical Engineering, school of Basic Medical Sciences, Wuhan University; 115 East Lake Road, Wuhan, Hubei, China, 430071; Tel: +8615971474380; Email: minzhao@whu.edu.com.

Manuscript word count (not including title, abstract, acknowledgment, references, tables, and figure legends): 2628

Abstract

Background: Cardiovascular disease (CVD) was in common in Coronavirus Disease 2019 (COVID-19) patients and associated with unfavorable outcomes. We aimed to compare the clinical observations and outcomes of SARS-CoV-2-infected patients with or without CVD.

Methods: Patients with laboratory-confirmed SARS-CoV-2 infection were clinically evaluated at Wuhan Seventh People's Hospital, Wuhan, China, from January 23 to March 14, 2020. Demographic data, laboratory findings, comorbidities, treatments and outcomes were collected and analyzed in COVID-19 patients with and without CVD.

Results: Among 596 patients with COVID-19, 215 (36.1%) of them with CVD. Compared with patients without CVD, these patients were significantly older (66 years vs 52 years) and had higher proportion of men (52.5% vs 43.8%). Complications in the course of disease were more common in patients with CVD, included acute respiratory distress syndrome (22.8% vs 8.1%), malignant arrhythmias (3.7% vs 1.0%) including ventricular tachycardia/ventricular fibrillation, acute coagulopathy(7.9% vs 1.8%), and acute kidney injury(11.6% vs 3.4%). The rate of glucocorticoid therapy (36.7% vs 25.5%), Vitamin C (23.3% vs 11.8%), mechanical ventilation (21.9% vs 7.6%), intensive care unit admission (12.6% vs 3.7%) and mortality (16.7% vs 4.7%) were higher in patients with CVD (both $p < 0.05$). The multivariable Cox regression models showed that older age (≥ 65 years old) (HR 3.165, 95%CI 1.722-5.817) and patients with CVD (HR 2.166, 95%CI 1.189-3.948) were independent risk factors for death.

Conclusions: CVD are independent risk factors for COVID-19 patients. COVID-19 patients

with CVD were more severe and had higher mortality rate, early intervention and vigilance should be taken.

Keywords: COVID-19, SARS-CoV 2, cardiovascular disease, myocardial injury.

Background

Coronavirus disease 2019 (COVID-19) pneumonia was first reported in Wuhan, Hubei Province, China, in December, 2019, followed by an outbreak across Hubei Province and other parts of the world¹⁻². At present, there are more than three million confirmed cases worldwide. The outbreak caused by severe acute respiratory syndrome coronavirus 2(SARS-CoV-2) infection has been pandemic and become a major global public health emergency. Respiratory symptoms were the main manifestation of COVID-19, but mounting evidence substantiates the presence of cardiac injury in patients. Several retrospective studies have shown increasing serum levels of High-sensitivity troponin I, creatine kinase, creatine kinase-mb in confirmed patients²⁻⁷. Wang et al⁴ reported that 16.7% of patients with COVID-19 were diagnosed had arrhythmias and 7.2% had acute myocardial injury. From other recent data, the most prevalent cardiovascular metabolic comorbidities were hypertension and cardia-cerebrovascular disease. However, currently there are limited studies on COVID-19 patients with cardiovascular disease(CVD), and the effect of cardiac injury on clinical outcome and prognosis remains to be determined. This retrospective study investigated the clinical characteristics and prognosis of the COVID-19 patients combined with cardiovascular disease.

Methods

Study Participants

For this retrospective study, we recruited patients diagnosed with laboratory-confirmed COVID-19 in the Wuhan Seventh People's Hospital from January 23, 2020 to March 14,

2020. All COVID-19 patients were diagnosed according to WHO interim guidelines⁸. The study was approved by the local Medical Research Ethics Board of Zhongnan Hospital of Wuhan University and Wuhan Seventh People's Hospital (No.2020068K), and complied with the edicts of the 1975 Declaration of Helsinki⁹. Oral consent was obtained from patients on admission.

Data collection

The electronic medical records of the patients were reviewed by a team of well-trained physicians worked in the two hospitals during the epidemic time. Patient demographical, epidemiological, clinical, laboratory, treatment and outcome data were collected with standardized data collection forms shared by the international Severe Acute Respiratory and Emerging Infection Consortium from electronic medical records. The researchers were responsible to contact the patients or their families in case of uncertainties about the data to maximum the accuracy of the data.

Laboratory procedures

Real-Time Transcription Polymerase Chain Reaction (RT-PCR) Assay for COVID-19. Throat swabs from the inpatients were collected at multiple time points after COVID-19 related symptom remission according to their treating physicians. SARS-CoV 2 in respiratory samples was qualitatively detected by Real-Time Transcription Polymerase Chain Reaction (RT-PCR) Assay according to publicly released COVID-19 sequence, as described previously⁴. Diagnostic criteria are based on the recommendations by National Institute for Viral Disease

Control and Prevention (China)¹⁰.

Routine blood examinations. Routine blood examinations were performed for COVID-19 inpatients, including complete blood count, coagulation profile, blood lipids and electrolytes, liver and renal function, cardiac biomarkers (Troponin T, creatine kinase-MB, myoglobin, NT-proBNP), inflammatory biomarkers and arterial blood gas analysis. The frequency of tests was determined by the treating physicians according to the clinical condition of the individuals.

Definition

Discharge and cure standards according to the Diagnosis and Treatment Protocol for Novel Coronavirus Pneumonia released by the National Health Commission of the PRC¹¹. Acute respiratory distress syndrome (ARDS) was defined according to the Berlin Definition¹². Malignant arrhythmia was diagnosed when rapid ventricular tachycardia lasting more than 30 seconds, inducing hemodynamic instability and/or ventricular fibrillation. Acute myocardial injury was defined if serum levels of troponin T (TnT) were above the 99th percentile upper reference². Acute coagulopathy was determined as all prothrombin time (PT), activated partial thromboplastin time (APTT), D-dimer and platelet count were abnormal, while excluded anticoagulant effect. Acute kidney injury was identified according the Kidney Disease: Improving Global Outcomes definition¹³.

Treatment

Treatment decisions for COVID-19 patients were made in accordance with the Chinese Diagnosis and Treatment Protocol of Coronavirus Pneumonia from first to seventh versions.

Since there were no effective antiviral drug or vaccine at present, most treatments were symptomatic and supportive. For mild and moderate patients, main treatment is symptomatic support and antifebrile. For severe and critical patients, on the basis of symptomatic treatment, complications should be proactively prevented, underlying diseases should be treated, secondary infections also be prevented, and organ function support should be provided timely. COVID-19 patients were used of oseltamivir, ribavirin or arbidol for antiviral therapy Most patients received a broad-spectrum antibiotic (moxifloxacin) to prevent secondary bacterial infection. Patients with PaO₂/FiO₂ and chest radiographs showing rapid deterioration were given respiratory support, vitamin C, and low-dose glucocorticoids (methylprednisolone). The long-term medications prior to admission such as anti-hypertensive drugs and hypoglycemic drugs were not discontinued.

Statistical Analysis

Continuous variables were expressed as mean (SD) or median (interquartile range) if appropriate. One-sample Kolmogorov-Smirnov test was used to verify the normality of distribution of continuous variables. Comparison of the means of continuous variables between two groups were made with Mann-Whitney U test. Categorical variables were expressed as frequencies (percentages). Comparison of categorical variables between two groups were made using Chi-square test or Fisher exact test if appropriate. Survival curves were plotted using Kaplan-Meier method with the log-rank test and compared between COVID-19 patients with vs without cardiovascular disease. Multivariate Cox regression models were uses to identify the independent risk factors for death in-hospital death. The number of possible predictors

entering into Cox regression was limited due to small number of death cases (n=54) and to avoid overfitting in the model. Five variables, including sex, age, cardiovascular disease, diabetes and malignancy were chosen for the final regression models. The statistical analysis was performed using the SPSS package for Windows (v.22.0, Chicago, IL) and GraphPad Prism(version8.0). A two-tailed P value < 0.05 was considered statistically significant.

Results

Clinical characteristics

A total of 596 patients with COVID-19 were included in this study, 215 of them with CVD (36.1%) and 384 without CVD (63.9%) (Table1). Among 215 patients with CVD,176 patients had hypertension, 36 had coronary heart disease, 10 had atrial fibrillation and 21 had cerebrovascular disease (Table3). The median age was 48(IQR, 47-68), and 280(47.0%) were male. Compared with patients without CVD, patients with CVD were significantly older (66 (IQR, 57-73) years vs 52 (IQR, 40-63) years; $p < 0.001$) and higher proportion of men (52.5% vs 43.8%; $p = 0.040$). Patients with CVD had higher systolic blood pressure (138(IQR,126-150) vs 126(IQR,118-136)), diastolic blood pressure (81(IQR,75-90) vs 78(IQR,72-85)), heart rate (89(IQR,79-100) vs 87(IQR,79-97)) and respiratory rate (20(IQR,20-21) vs 20(IQR,20-20)) to admission (all p value < 0.05). Diabetes (13.3%) and malignancy (4.5%) were most common coexisting in COVID-19 patients. The rate of diabetes (27.0% vs 5.5%; $p < 0.001$) and malignancy (7.4% vs 2.9%; $p = 0.010$) in the patients with CVD was higher than patient

without CVD. There were no significant differences in chronic obstructive pulmonary disease, hepatic dysfunction, renal dysfunction and smoking history between the two groups (Table1).

Laboratory findings on admission

The laboratory findings on admission are shown in Table 2. Patients with CVD compared with patients without CVD showed higher leukocyte counts (5770(IQR, 4340-7800) vs 4850(IQR, 3850-6415)cells/ μ L), neutrophil counts (3860(IQR, 2725-6260) vs 3060(IQR, 2215-4205)cells/ μ L) and lower lymphocyte counts (930(IQR, 618-1430) vs 1160(IQR,725-1625)cells/ μ L) ($p < 0.001$ for both), but platelets counts and hematocrit did not differ according to CVD. Patients with CVD had significant higher procalcitonin (0.07(IQR,0.04-0.18) vs 0.04(IQR,0.03-0.08)ng/mL), high-sensitivity C-reactive protein (24.5(IQR,3.6-79.4) vs 7.5(IQR,1.0-38.3)mg/mL) and globulin (27.6(IQR,24.9-31.9) vs 26.0(IQR,23.1-28.3)g/L)($p < 0.001$ for both) than patients without CVD. Patients with CVD also had longer prothrombin time (12.6(IQR,11.7-13.7) vs 12.2(IQR,11.4-13.2) seconds, $p = 0.003$) and high levels of D-dimer (0.43(IQR,0.18-2-78) vs 0.18(IQR,0.09-0.43) μ g/mL, $p < 0.001$). The cardiac biomarkers, including creatine kinase-MB fraction(1.81(IQR,0.95-3.43) vs 1.01(IQR,0.66-1.61) ng/mL), myoglobin(53.3(IQR,27.6-114.8) vs 25.0(IQR,21.0-43.5) ng/mL), N-terminal pro-brain natriuretic peptide(300.8(IQR,132.2-648.4) vs 103.5(IQR,39.2-287.6) pg/mL) and troponin T(0.012(IQR,0.008-0.024) vs 0.007(IQR,0.005-0.011) ng/mL) were significantly higher in patients with CVD(all p value < 0.001). Total, triglyceride, low-density lipoprotein cholesterol, potassium, and calcium levels did not differ between the two groups, but patients with CVD

had lower levels of high-density lipoprotein (1.09(IQR, 0.94-1.31) vs 1.16(IQR, 0.98-1.44) mmol/L, $p=0.01$). Patients with CVD had higher levels of alanine aminotransferase (23(IQR, 15-38) vs 19(IQR, 13-31) U/L), aspartate aminotransferase (29(IQR, 19-44) vs 23(IQR, 34-17) $\mu\text{mol/L}$) and creatinine(66(IQR,55-82) vs 62(IQR,52-72) $\mu\text{mol/L}$)(all p value < 0.05). Respiratory dysfunction is more serious in patients with CVD. In terms of blood gas analysis, patients with CVD had lower partial pressure of oxygen (PaO_2) (80(IQR,58-118) vs 95(IQR,77-122) mmHg), $\text{PaO}_2/\text{fraction of inspired oxygen}$ (FiO_2) (333.0(IQR,163.6-447.2) vs 400.0(IQR,290.6-504.8) mmHg), SpO_2 (96(IQR,90-99) vs 98(IQR,95-99)) and HCO_3 (25.4(IQR,22.2-27.8) vs 26.6(IQR,24.7-28.1) mEq/L) (all p value < 0.05).

Treatment, complication and outcomes

Antivirus therapy (78.4%) and antibiotic therapy (74.8%) were the most common treatments in both groups. The rate of glucocorticoid therapy (36.7% vs 25.5%; $p = 0.004$), Vitamin C (23.3% vs 11.8%; $p < 0.001$), mechanical ventilation (21.9% vs 7.6%; $p < 0.001$) were higher in patients with CVD compared with those without CVD. There were significant differences between two groups in noninvasive mechanical ventilation (11.6% with CVD vs 4.2% without CVD; $p = 0.001$) and invasive mechanical ventilation (10.2% with CVD vs 3.4% without CVD; $p = 0.001$) (Table1).

In-hospital complications, including acute respiratory distress syndrome (22.8% vs 8.1%; $p < 0.001$), malignant arrhythmias (3.7% vs 1.0%; $p = 0.034$) including ventricular

tachycardia/ventricular fibrillation, acute coagulopathy(7.9% vs 1.8%; $p < 0.001$), and acute kidney injury(11.6% vs 3.4%; $p < 0.001$) developed more frequently in patients with CVD.

Patients with CVD vs those without CVD had no statistically differences in the hospitalization days and the duration from illness onset to discharge or death. Patients with CVD more likely to require intensive care unit (ICU) admission (12.6% vs 3.7%; $p < 0.001$). The mortality rate of patients with CVD was 16.7%, which was markedly higher than patients without CVD (4.7%, $p < 0.001$) and overall study population (9.1%). The survival curves of COVID-19 patients with CVD vs without CVD are shown in Figure.1. As summarized in Table 4, after adjusting for sex, age, cardiovascular diseases, diabetes and malignancy, the multivariable adjusted Cox regression models showed that older age (≥ 65 years old)(HR 3.165, 95%CI 1.722-5.817) and patients with cardiovascular diseases (HR 2.166, 95%CI 1.189-3.948) were independent risk factors for in-hospital death. After analysis of the classification of cardiovascular diseases, we found that hypertension (HR 2.606, 95%CI 1.443-4.706) and coronary heart disease (HR 2.330, 95%CI 0.985-5.512) were related to death.

Discussion

This study described the characteristics of COVID-19 patients with vs without CVD and identified risk factors associated with in-hospital mortality. In this study, patients with CVD accounted for 36.1% and hypertension accounted for the highest proportion, which was consistent with previous studies²⁻⁷. Patients with CVD were more likely to have complications in the course of the disease, requiring glucocorticoid therapy and mechanical ventilation for a

larger proportion, and had a higher rate of ICU admission and death. Old age (≥ 65 years) and cardiovascular diseases, especially hypertension and coronary heart disease, were independently associated with in-hospital death.

CVD was the most common comorbidity in patients with coronavirus. CVD was an independent risk factor for death or other adverse outcomes in patients with severe acute respiratory syndrome (SARS)¹⁴⁻¹⁵, about 50% of patients with Middle East respiratory syndrome coronavirus (MERS) had hypertension and diabetes mellitus^{Error! Reference source not found.}. It had been confirmed that SARS-CoV-2 infection depends on the binding of spike glycoprotein on the surface of and angiotensin-converting enzyme 2 (ACE2)^{Error! Reference source not found.}, ACE2 plays a key role in regulating the invasion of coronavirus into human cells. ACE2 was highly expressed in the heart as well as in lung cells^{Error! Reference source not found.}. It protected the cardiovascular system by counteracting the over activation of angiotensin II (AngII) in the renin angiotensin system¹⁶. Therefore, the increase of ACE2 activity in patients with cardiovascular disease was considered to be the mechanism of high prevalence in patients with CVD.

The remarkably increase in coagulation profiles such as D-dimer and prothrombin time were observed in patients with CVD. Early stage of CVD was usually accompanied by vascular endothelial dysfunction and organic lesions, while oxidative stress and blood pressure can damage vascular endothelium. The vicious cycle of them aggravated vascular endothelial damage, and endothelial damage can cause hypercoagulability²⁰. In our study, patients with CVD were mostly in severe, they were more likely to form venous thrombosis of lower

extremities in need of respiratory support and long-term bed rest, which caused the increase of D-dimer. ACE2 was also expressed in vascular endothelial cells. Previous studies showed that the expression of ACE2 on the cell surface can be reduced after SARS-CoV infection²¹, which led to the activation of renin-angiotensin system, promoted vascular contraction and endothelial injury. The injury of endothelium caused the up-regulation of tissue factor expression and imbalance of fibrinolysis system²². In the pneumonia model of bacterial infection, the level of ACE2 was critical for the severity of inflammation. ACE2 reduction promoted the release of inflammatory factors, which results in the infiltration of a large number of neutrophils, leading to excessive inflammatory response and immune damage²³⁻²⁴. Therefore, it was speculated that ACE2 is a key regulatory factor of inflammatory reaction and coagulation dysfunction in patients with COVID-19.

Combining CVD caused the reduction in the function of cardiac reserve, bad tolerance to severe pneumonia, and acute cardiovascular events were more likely to occur in cases of viral infection. In this study, the levels of myocardial biomarkers in patients with CVD was significantly higher than that of patients without CVD on admission, and the rates of acute myocardial injury in hospital was remarkably increased. The infection of SARS-CoV-2 may cause direct primary myocardial injury or aggravate the original myocardial injury. Previous reports showed that ACE2 expression was significantly decreased in the myocardium of mice infected with SARS-coronavirus (SARS-CoV), resulting in ACE2-dependent myocardial injury²⁵. In addition, SARS-CoV 2 had a stronger interaction with ACE2 than SARS-CoV²⁶, and may directly or indirectly cause heart damage through ACE2-related pathways. Ribose

nucleic acid (RNA) of SARS-CoV was detected in the hearts of dead SARS patients and viral inclusion bodies were found in cardiac myocytes in pathological examination. It proved that SARS-CoV can directly infect the heart. Pathological findings of COVID-19 patients showed degeneration and necrosis of the cardiomyocytes²⁷, so the same mechanism could not be ruled out for SARS-CoV 2. Autopsy report showed interstitial mononuclear inflammatory infiltrates in heart tissue. In this study, inflammatory biomarkers were significantly increased in patients with CVD, indicating that inflammatory cell necrosis promoted inflammatory response and led to cytokine storm damage to the myocardium, which can be severe and even lead to fulminant myocarditis²⁸⁻²⁹.

Lesions of COVID-19 patients were mainly focus on the lung, but other organs may also have different degrees of damage. Patients with CVD had higher rate of acute liver injury and acute renal injury in hospitalization. A study reported that specific expression of ACE2 in bile duct cells may lead to liver injury after SARS-CoV 2 infection³⁰. Patients with CVD had poor compensatory ability of cardiac function and inflammatory storm, which exacerbated microcirculation ischemia and hypoxia of liver cells and further aggravated liver function injury. As the organ with high expression of ACE2, kidney was the primary target of injury. Furthermore, pneumonia caused by SARS-CoV 2 infection caused gas exchange disorders, acidosis and oxygen free radicals during anoxic reperfusion made patients more prone to renal dysfunction.

This study has several limitations. First, this is a single-center descriptive study, the patients included in this study were early stages of the epidemic, coronaviruses at this stage

were more virulent. Data from more centers and more patient populations are needed to further confirm the relationship between CVD and COVID-19. Second, due to limited medical resources and time for diagnosis in the outbreak, there was a lack of some important laboratory data for the patients, such as echocardiography, electrocardiogram and cytokines. Finally, this study only observed the starting point and results of patients, lacking dynamic observation of disease progression.

Conclusions

Older age (≥ 65 years old) and CVD are independent risk factors for COVID-19 patients. COVID-19 patients with CVD were more severe and had higher mortality rate, early intervention and vigilance should be taken.

Funding

This work was supported by the National Natural Science Foundation of China (81670409) (WJ).

Acknowledgements

We acknowledge all health-care workers involved in the diagnosis and treatment of patients at Wuhan Seventh People's Hospital, and Liu Lei for statistical consultation.

References

1. Zhu N, Zhang D, Wang W, Li X, Yang B, Song J, et al. China Novel Coronavirus Investigating and Research Team. A Novel Coronavirus from Patients with Pneumonia in China, 2019. *N Engl J Med*. 2020 Feb 20;382(8):727-733.
2. Huang C, Wang Y, Li X, Ren L, Zhao J, Hu Y, et al. Clinical features of patients infected with 2019 novel coronavirus in Wuhan, China. *Lancet*. 2020 Feb 15;395(10223):497-506.
3. Chen N, Zhou M, Dong X, Qu J, Gong F, Han Y, et al. Epidemiological and clinical characteristics of 99 cases of 2019 novel coronavirus pneumonia in Wuhan, China: a descriptive study. *Lancet*. 2020 Feb 15;395(10223):507-513.
4. Wang D, Hu B, Hu C, Zhu F, Liu X, Zhang J, et al. Clinical Characteristics of 138 Hospitalized Patients With 2019 Novel Coronavirus-Infected Pneumonia in Wuhan, China. *JAMA*. 2020 Feb 7;323(11):1061–9.
5. Guan WJ, Ni ZY, Hu Y, Liang WH, Ou CQ, He JX, et al. Clinical Characteristics of Coronavirus Disease 2019 in China. *N Engl J Med*. 2020;382(18):1708-1720.
6. Clinical findings in a group of patients infected with the 2019 novel coronavirus (SARS-Cov-2) outside of Wuhan, China: retrospective case series. *BMJ*. 2020;368:m792. Published 2020 Feb 27.
7. Yang X, Yu Y, Xu J, Shu H, Xia J, Liu H, et al. Clinical course and outcomes of critically ill patients with SARS-CoV-2 pneumonia in Wuhan, China: a single-centered, retrospective, observational study. *Lancet Respir Med*. 2020;8(5):475-481.

8. World Health Organization. Clinical management of severe acute respiratory infection when Novel coronavirus (nCoV) infection is suspected: interim guidance. 2020.
9. Forster HP, Emanuel E, Grady C. The 2000 revision of the Declaration of Helsinki: a step forward or more confusion? *Lancet* 2001; 358:1449–1453.
10. National Institute for Viral Disease Control and Prevention (China). Specific primers and probes for detection 2019 novel coronavirus. Published January 21 , 2020. Accessed January 31,2020. http://ivdc.chinacdc.cn/kjz/202001/t20200121_211337.html
11. National Health Commission of the People’s Republic of China. Diagnosis and treatment protocol for COVID-19 (Trial Version 7). Updated: March 29,2020. http://en.nhc.gov.cn/2020-03/29/c_78469.htm (accessed March 29, 2020).
12. Ranieri VM, Rubenfeld GD, Thompson BT, Ferguson ND, Caldwell E, Fan E, et al. ARDS Definition Task Force. Acute respiratory distress syndrome: the Berlin Definition. *JAMA*. 2012;307:2526–253.
13. Khwaja A. KDIGO clinical practice guidelines for acute kidney injury. *Nephron Clin Pract*. 2012;120:c179-184.
14. Chan JW, Ng CK, Chan YH, Mok TY, Lee S, Chu SY, et al. Short term outcome and risk factors for adverse clinical outcomes in adults with severe acute respiratory syndrome (SARS). *Thorax*. 2003;58(8):686-689.
15. Booth CM, Matukas LM, Tomlinson GA, Rachlis AR, Rose DB, Dwosh HA, et al. Clinical features and short-term outcomes of 144 patients with SARS in the greater Toronto area. *JAMA*. 2003;289(21):2801-2809.

16. Badawi A, Ryoo SG. Prevalence of comorbidities in the Middle East respiratory syndrome coronavirus (MERS-CoV): a systematic review and meta-analysis. *Int J Infect Dis.* 2016;49:129-133.
17. Hoffmann M, Kleine-Weber H, Schroeder S, Krüger N, Herrler T, Erichsen S, et al. SARS-CoV-2 Cell Entry Depends on ACE2 and TMPRSS2 and Is Blocked by a Clinically Proven Protease Inhibitor. *Cell.* 2020;181(2):271-280.
18. Qi Y, Shenoy V, Wong F, Li H, Afzal A, Mocco J, et al. Lentivirus-mediated overexpression of angiotensin-(1-7) attenuated ischaemia-induced cardiac pathophysiology. *Exp Physiol.* 2011;96(9):863-874.
19. Santos RAS, Sampaio WO, Alzamora AC, Motta-Santos D, Alenina N, Bader M, et al. The ACE2/Angiotensin-(1-7)/MAS Axis of the Renin-Angiotensin System: Focus on Angiotensin-(1-7). *Physiol Rev.* 2018;98(1):505-553.
20. Godo S, Shimokawa H. Endothelial Functions. *Arterioscler Thromb Vasc Biol.* 2017;37(9):e108-e114.
21. Glowacka I, Bertram S, Herzog P, Pfefferle S, Steffen I, Muench MO, et al. Differential downregulation of ACE2 by the spike proteins of severe acute respiratory syndrome coronavirus and human coronavirus NL63. *J Virol.* 2010;84(2):1198-1205.
22. Wang M, Hao H, Leeper NJ, Zhu L. Early Career Committee. Thrombotic Regulation From the Endothelial Cell Perspectives. *Arterioscler Thromb Vasc Biol.* 2018;38(6):e90-e95.

23. Sodhi CP, Wohlford-Lenane C, Yamaguchi Y, Prindle T, Fulton WB, Wang S, et al. Attenuation of pulmonary ACE2 activity impairs inactivation of des-Arg⁹bradykinin/BKB1R axis and facilitates LPS-induced neutrophil infiltration. *Am J Physiol Lung Cell Mol Physiol*. 2018;314(1):L17-L31.
24. Sodhi CP, Nguyen J, Yamaguchi Y, Werts AD, Lu P, Ladd MR, et al. A Dynamic Variation of Pulmonary ACE2 Is Required to Modulate Neutrophilic Inflammation in Response to *Pseudomonas aeruginosa* Lung Infection in Mice. *J Immunol*. 2019;203(11):3000-3012.
25. Oudit GY, Kassiri Z, Jiang C, Liu PP, Poutanen SM, Penninger JM, et al. SARS-coronavirus modulation of myocardial ACE2 expression and inflammation in patients with SARS. *Eur J Clin Invest*. 2009;39(7):618-625.
26. Chen Y, Guo Y, Pan Y, Zhao ZJ. Structure analysis of the receptor binding of 2019-nCoV. *Biochem Biophys Res Commun*. 2020;525(1):135-140.
27. Xu Z, Shi L, Wang Y, Zhang J, Huang L, Zhang C, et al. Pathological findings of COVID-19 associated with acute respiratory distress syndrome. *Lancet Respir Med*. 2020;8(4):420-422.
28. Yang C, Jin Z. An Acute Respiratory Infection Runs Into the Most Common Noncommunicable Epidemic-COVID-19 and Cardiovascular Diseases [published online ahead of print, 2020 Mar 25]. *JAMA Cardiol*. 2020;10.1001/jamacardio.2020.0934. doi:10.1001/jamacardio.2020.0934

29. Zeng JH, Liu YX, Yuan J, Wang FX, Wu WB, Li JX, et al. First case of COVID-19 complicated with fulminant myocarditis: a case report and insights [published online ahead of print, 2020 Apr 10]. *Infection*. 2020;1-5. doi: 10.1007/s15010-020-01424-5.
30. CHAI X,HU L,ZHANG Y. Specific ACE2 expression in cholangiocytes may cause liver damage after 2019-n CoV infection. *bioRxiv*,2020.[Online ahead of print]

Tables

Table1 Characteristics, Complications, Treatments and Outcomes Among Different Groups

	Total(n=596)	With CVD (n=215)	Without NCVD (n=381)	p value
Characteristic				
Male-counts(%)	280(47.0)	113(52.6)	167(43.8)	0.040
Age-years, M(IQR)	58(47,68)	66(57,73)	52(40,63)	<0.001
Age≥65(%)	200(33.6)	119(55.3)	81(21.3)	<0.001
Temperature(°C), M(IQR)	36.6(36.4,37.0)	36.6(36.4,37.0)	36.6(36.4,37.0)	0.510
SBP, M(IQR)	130(120,141)	138(126,150)	126(118,136)	<0.001
DBP, M(IQR)	80(73,86)	81(75,90)	78(72,85)	<0.001
HR, M(IQR)	88(78,98)	89(79,100)	87(78,97)	0.021
RR, M(IQR)	20(20,20)	20(20,21)	20(20,20)	<0.001
Comorbidities-count(%)				
Diabetes	79(13.3)	58(27.0)	21(5.5)	<0.001
COPD	4(0.7)	2(0.9)	2(0.5)	0.622
Hepatic dysfunction	19(3.2)	6(2.8)	13(3.4)	0.678

Renal dysfunction	11(1.8)	7(3.3)	4(1.0)	0.064
Malignancy	27(4.5)	16(7.4)	11(2.9)	0.010
Smoking	32(5.4)	15(7.0)	17(4.5)	0.192
Treatment-count(%)				
Antivirus therapy	467(78.4)	174(80.9)	293(76.9)	0.252
Antibiotic therapy	446(74.8)	171(79.5)	275(72.2)	0.047
Glucocorticoid therapy	176(29.5)	79(36.7)	97(25.5)	0.004
Immunoglobulin	55(9.2)	21(9.8)	34(8.9)	0.733
Vitamin C	95(15.9)	50(23.3)	45(11.8)	<0.001
Chinese Medicine	266(44.6)	96(44.7)	170(44.6)	0.994
Mechanical ventilation	76(12.8)	47(21.9)	29(7.6)	<0.001
NMV	41(6.9)	25(11.6)	16(4.2)	0.001
IMV	35(5.9)	22(10.2)	13(3.4)	0.001
CRRT	4(0.7)	2(0.9)	2(0.5)	0.622
Complication-count(%)				
ARDS	80(13.4)	49(22.8)	31(8.1)	<0.001
VT/VF	12(2.0)	8(3.7)	4(1.0)	0.034
Acute myocardial injury	126(21.1)	78(36.3)	48(12.6)	<0.001
Acute coagulopathy	24(4.0)	17(7.9)	7(1.8)	<0.001
Acute liver injury	31(5.2)	11(5.1)	20(5.2)	0.944
Acute kidney injury	38(6.4)	25(11.6)	13(3.4)	<0.001
Clinical outcome				
Hospitalization-days, M(IQR)	16(9,24)	16(9,24)	15(9,24)	0.374
Duration ^a -days, M(IQR)	29(20,38)	30(20,39)	28(20,37)	0.250
Death-count(%)	54(9.1)	36(16.7)	18(4.7)	<0.001
ICU(%)	41(6.9)	27(12.6)	14(3.7)	<0.001

Duration^a : duration from the onset of symptom to death or discharge

Abbreviations: M, median; IQR, interquartile range; SBP, systolic blood pressure; DBP, diastolic blood pressure; HR, heart rate; RR, respiratory rate; COPD, chronic obstructive pulmonary disease; ARDS, acute respiratory distress syndrome; VF, ventricular fibrillation; VT, ventricular tachycardia; NMV, noninvasive mechanical ventilation; IMV, invasive mechanical ventilation; CRRT, continuous renal replacement therapy.

Table 2 Laboratory Result Among Different Groups

	Median (IQR)			P value
	Total	With CVD	Without CVD	
Complete blood cell				
Leukocyte, / μ L	5100(3963-6940)	5770(4340-7800)	4850(3850-6415)	<0.001
Neutrophil, / μ L	3370(2380-4980)	3860(2725-6260)	3060(2215-4205)	<0.001
Lymphocyte, / μ L	1070(670-1530)	930(618-1430)	1160(725-1625)	<0.001
Platelets $\times 10^3$ / μ L	195(146-246)	185(138-246)	197(152-244)	0.278
Hematocrit, %	38.2(34.9-40.9)	38.3(34.6-41.3)	38.1(35.2-40.6)	0.873
Inflammatory biomarkers				
hsCRP, mg/L	12.2(1.6-50.2)	24.5(3.6-79.4)	7.5(1.0-38.3)	<0.001
Procalcitonin, ng/mL	0.05(0.04-0.11)	0.07(0.04-0.18)	0.04(0.03-0.08)	<0.001
Globulin, g/L	26.5(23.6-29.5)	27.6(24.9-31.9)	26.0(23.1-28.3)	<0.001
Coagulation profiles				
Prothrombin time, s	12.3(11.6-13.4)	12.6(11.7-13.7)	12.2(11.4-13.2)	0.003
APTT, s	32.4(30.2-34.4)	32.0(29.6-34.3)	32.5(30.6-34.4)	0.194
D-dimer, μ g/mL	0.23(0.12-0.70)	0.43(0.18-2-78)	0.18(0.09-0.43)	<0.001

Cardiac biomarkers

Creatine kinase-MB fraction, ng/mL	1.19(0.74-2.18)	1.81(0.95-3.43)	1.01(0.66-1.61)	<0.001
Myoglobin, ng/mL	31.1(21.0-64.0)	53.3(27.6-114.8)	25.0(21.0-43.5)	<0.001
NT-proBNP, pg/mL	187.8(59.4-440.4)	300.8(132.2-648.4)	103.5(39.2-287.6)	<0.001
TnT, ng/mL	0.009(0.006-0.014)	0.012(0.008-0.024)	0.007(0.005-0.011)	<0.001

Blood lipids

TC, mmol/L	3.75(3.16-4.42)	3.68(3.07-4.28)	3.81(3.17-4.50)	0.168
TG, mmol/L	0.96(0.70-1.41)	0.99(0.71-1.55)	0.93(0.69-1.35)	0.202
HDL, mmol/L	1.14(0.97-1.39)	1.09(0.94-1.31)	1.16(0.98-1.44)	0.01
LDL, mmol/L	2.14(1.70-2.65)	2.20(1.71-2.62)	2.12(1.69-2.68)	0.991

Electrolytes serum

Potassium, mmol/L	3.88(3.54-4.22)	3.89(3.51-4.30)	3.87(3.56-4.20)	0.977
Calcium, mmol/L	2.22(2.11-2.33)	2.19(2.07-2.33)	2.22(2.11-2.33)	0.143

Liver and renal function

ALT, U/L	21(13-34)	23(15-38)	19(13-31)	0.002
AST, U/L	25(18-37)	29(19-44)	23(34-17)	<0.001
Creatinine, μ mol/L	63(53-74)	66(55-82)	62(52-72)	0.001

Blood gas analysis

PH	7.42(7.38-7.45)	7.43(7.38-7.46)	7.42(7.38-7.45)	0.268
PaO ₂ , mmHg	91(68-121)	80(58-118)	95(77-122)	0.002
PaO ₂ /FiO ₂ , mmHg	380.9(224.3-485.7)	333.0(163.6-447.2)	400.0(290.6-504.8)	<0.001
Lactic acid, mmHg	1.8(1.4-2.4)	1.9(1.4-2.5)	1.8(1.3-2.2)	0.046
HCO ₃ , mEq/L	26.2(23.8-27.9)	25.4(22.2-27.8)	26.6(24.7-28.1)	0.002
SpO ₂	97(94-99)	96(90-99)	98(95-99)	0.001

Abbreviations: IQR, interquartile range; APTT, activated partial thromboplastin time; TC, Total Cholesterol; TG, Triglyceride Cholesterol; HDL, high-density lipoprotein; LDL, low-

density lipoprotein; hsCRP , high-sensitivity C-reactive protein; NT-proBNP , N-terminal pro–brain natriuretic peptide; TnT, troponin T; ALT, alanine aminotransferase; AST, aspartate transaminase.

Table3 Classification of cardiovascular disease

	Total	Survivors, n(%)	Non-survivors, n(%)
Cardiovascular disease	215	179(83.2)	36(16.8)
Hypertension	176	145(82.4)	31(17.6)
Coronary heart disease	36	28(77.8)	8(22.2)
Atrial fibrillation	10	7(77.8)	3(33.2)
Cerebrovascular disease	21	15(71.4)	6(28.6)

Table 4 Cox regression analyses of factors for in-hospital death of all COVID-19 patients

	Univariable HR (95%CI)	P value	Multivariable HR (95%CI)	P value
Sex	1.696(0.980-2.934)	0.059	1.513(0.871-2.629)	0.141
Age \geq 65	4.284(2.385-7.694)	<0.001	3.165(1.722-5.817)	<0.001
Cardiovascular disease	3.315(1.881-5.842)	<0.001	2.166(1.189-3.948)	0.012
Diabetes	2.084(1.133-3.835)	0.018	1.295(0.685-2.446)	0.426
Malignancy	2.648(1.054-6.655)	0.038	2.277(0.900-5.762)	0.082

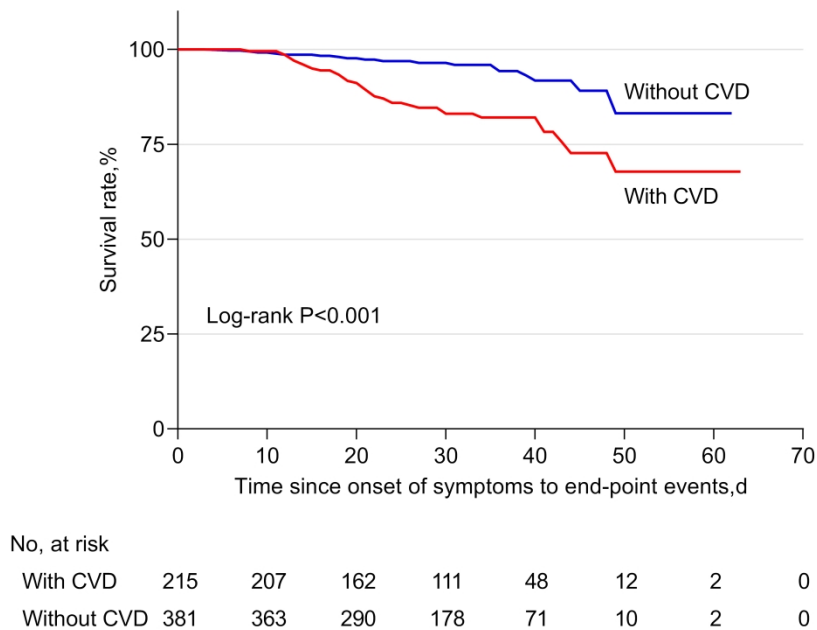
Table 5 Cox regression analyses of factors for in-hospital death of all COVID-19 patients

	Univariable HR(95%CI)	P value	Multivariable HR (95%CI)	P value
Sex	1.696(0.980-2.934)	0.059	1.587(0.910-2.769)	0.104
Age \geq 65	4.284(2.385-7.694)	<0.001	3.007(1.634-5.533)	<0.001
Diabetes	2.084(1.133-3.835)	0.018	1.224(0.648-2.314)	0.533
Malignancy	2.648(1.054-6.655)	0.038	2.117(0.822-5.454)	0.120
Hypertension	3.014(1.755-5.177)	<0.001	2.606(1.443-4.706)	0.001
Coronary heart disease	2.744(1.294-5.819)	0.008	2.330(0.985-5.512)	0.054
Arrhythmia	2.541(0.789-8.178)	0.118	1.941(0.245-3.619)	0.930
Cerebrovascular disease	3.614(1.540-8.477)	0.003	1.599(0.584-4.377)	0.361

Figure Legends

Figure1 Survival analysis by Kaplan-Meier curve in patients with vs without cardiovascular disease

Figure 1. Survival analysis by Kaplan-Meier curve in patients with vs without cardiovascular disease



Survival analysis by Kaplan-Meier curve in patients with vs without cardiovascular disease

191x135mm (600 x 600 DPI)

Definitions for Acronyms

CVD	Cardiovascular disease
COVID-19	Coronavirus Disease 2019
SARS-CoV-2	severe acute respiratory syndrome coronavirus 2
RT-PCR	Real-Time Transcription Polymerase Chain Reaction
M	median
IQR	interquartile range
SBP	systolic blood pressure
DBP	diastolic blood pressure
HR	heart rate
RR	respiratory rate
COPD	chronic obstructive pulmonary disease
ARDS	acute respiratory distress syndrome
VF	ventricular fibrillation
VT	ventricular tachycardia
NMV	noninvasive mechanical ventilation
IMV	invasive mechanical ventilation
CRRT	continuous renal replacement therapy.
APTT	activated partial thromboplastin time
TC	Total Cholesterol
TG	Triglyceride Cholesterol
HDL	high-density lipoprotein
LDL	low-density lipoprotein
hsCRP	high-sensitivity C-reactive protein
NT-proBNP	N-terminal pro–brain natriuretic peptide
TnT	troponin T
ALT	alanine aminotransferase
AST	aspartate transaminase.
SARS	severe acute respiratory syndrome

MERS Middle East respiratory syndrome coronavirus
ACE2 angiotensin-converting enzyme 2
AngII activation of angiotensin II
RNA Ribose nucleic acid